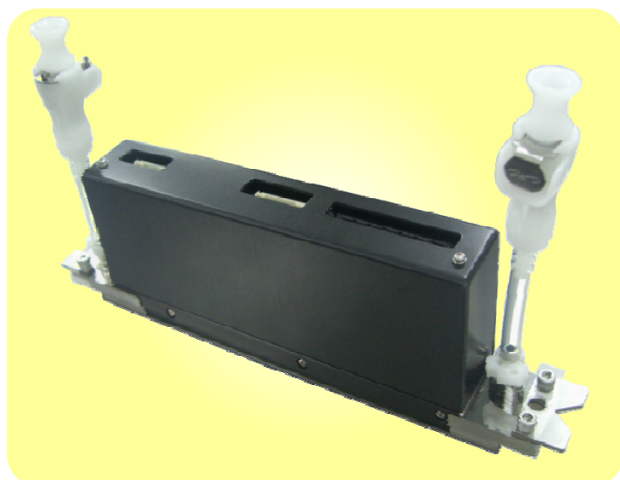
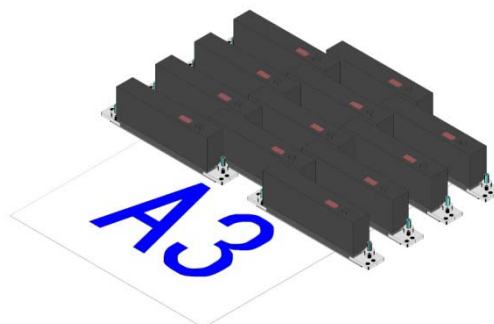


KJ4B-QA06NTB-STDV

600 dpi inkjet printhead for water based inks.



KJ4B-QA06NTB-STDV inkjet printhead is designed for high speed single-pass and multi-pass applications with water based ink. It delivers 600 dpi × 600 dpi resolution at 75 m/min by making use of 2,656 nozzles arranged across 108 mm width.



FEATURES

- 108mm Wide Print Width
- 600 dpi High Density Nozzle Arrangement
- 75m/min High Speed (Single Pass Printing)

By employing wide print width, high density nozzle arrangement and highly responsive ink channel design, its productivity and stability are well recognized in such fields as textile printing, high speed roll fed press, additional printing, coding and other industrial applications.

* The head size is compatible with KJ4A-TA, KJ4A-AA models.

SPECIFICATIONS

Ink Type	Water based
Dimensions (W × D × H)	200 × 25 × 57.9 mm
Dry Weight	420 g
Total Nozzles*1	2,656
Standard Resolution	600×600dpi
Effective Print Width*2	108.25 mm
Max. Drive Frequency	30 kHz
Max. Print Speed @ 600 dpi	1,270 mm/s (76.2 m/min)
Drop Volumes	5, 7, 12 and 18 pl *3
Typical Ink Viscosity	5.0 - 6.0 mPa*s
Input Voltage	3.3 V for logic / 26 V for driving
Temperature Control	Reservoir heater and thermistor are equipped.

*1 Includes nozzles outside of the effective print width.

*2 Area in which nozzles are arranged in 600 dpi.

*3 18pl drop is available up to 20 kHz.